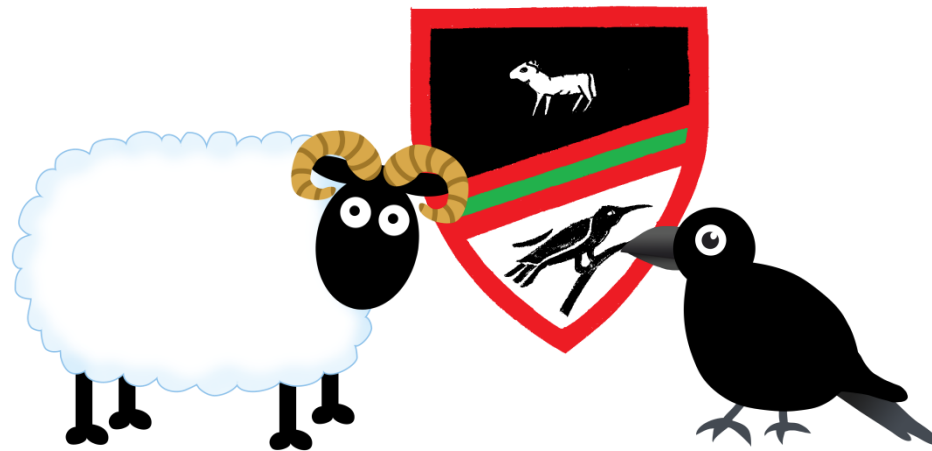


Parent and Carer Questionnaire

July 2017



This consultation was completed during the Summer Parents' Evening of 2017.

Key Information:

65 questionnaires were received and analysed.

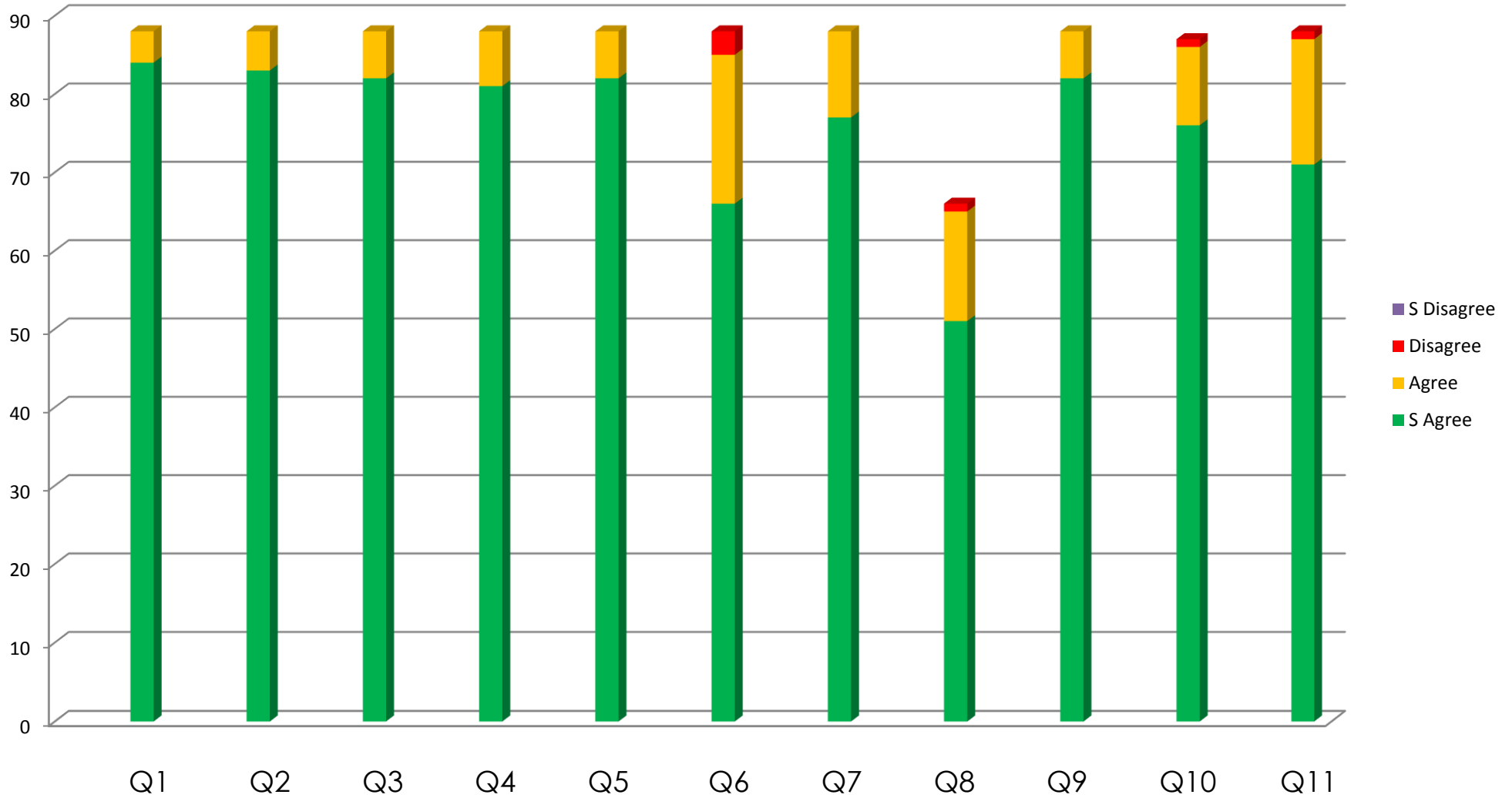
Question Outcomes:

Q1	My child is happy at Cheveley Park Primary School.
Q2	My child feels safe at Cheveley Park School
Q3	My child makes good progress at Cheveley Park Primary School
Q4	My child is well looked after by Staff at Cheveley Park Primary School
Q5	My child is taught well at Cheveley Park Primary School.
Q6	My child receives appropriate homework for their age.
Q7	The school makes sure children are well behaved in school.
Q8	The school deals effectively with bullying.
Q9	The school is well led and managed.
Q10	The school responds to any concerns or worries that I raise.
Q11	I receive valuable information about my child's progress.

Total
%

Strongly Agree	Agree	Disagree	Strongly Disagree	Don't Know
84	4			
83	5			
82	6			
81	7			
82	6			
66	19	3		
77	11			
51	14	1		22
82	6			
76	10	1		1
71	16	1		
835	104	6	0	23
88%	11%	0.6%	0%	N/A
S Agree	Agree	Disagree	S Disagree	

Graphical Breakdown of Responses:



Recommendation Rating:

100% of parents who responded would recommend our school.

School Improvement:

Can you think of anything that we could do to improve our school further?

Yes	No
26%	74%

The responses which indicated 21 areas to develop are as follows:

Look at an app? X2	Bigger meals for older children	Keep parents informed about behaviour before a big issue (the 1 disagree above)	More homework / too much homework	Support on techniques to support at home more	Letters out efficiently
Detail to help parents prepare children for assessments	Guided reading in place every week	The work wear of some teachers is not smart	To see marked homework	Homework sometimes is random days and subjects	Children's questionnaire may not capture true feelings on bullying
Ks 1 after school clubs x2	Better buddy system	More on to one time with a teacher	Getting homework out of child's bag	Notice for events can be short x2	Reading books changed on the day planned
Change of late gate policy	Less sweets – more stickers etc	Less letters home			

These issues will be discussed at school level and action plans completed if deemed appropriate.

Reviewing Progress:

Since the questionnaire last year, there has been a significant rise in the % of strongly agree ratings, with a rise from a 77% average to a 88%. This is excellent progress.

The strengths in 2017, generally remain the strengths in 2016: children being happy, safe, making good progress, looked after, well taught, and leadership and management. Behaviour rating has significantly improved.

The less successful areas (lower strongly agree ratings / disagree ratings) remain as homework, bullying

School Successes:

Families were asked... *Is there anything that you particularly like or appreciate that we do?*

✓ How well led and managed it is.	✓ Everything	✓ Approachable
✓ Focus on areas of development	✓ Focus on whole child – not just academics	✓ Wide range of activities
✓ Great values		
✓ Level of enthusiasm shown by staff	✓ Staff taking a pride in their work	✓ Everyone is so lovely and gives advice energy, commitment and dedication of reception staff
✓ Approachable staff	✓ Miss Errington!	
✓ All of it! The children are so happy	✓ Learning is made fun	
✓ Children have fun whilst being taught	✓ Everyone is so welcoming – treating like family	✓ Friendly atmosphere – helps children to settle
✓ I feel listened to and valued		
✓ Friendliness and relationship with the children	✓ The effort that goes in to the lessons	✓ Opportunities for learning outside the classroom
	✓ Nurturing staff	
✓ Friendly, approachable staff	✓ Great communication	✓ They love the children
✓ Children treated as individuals	✓ Brilliant with the children	✓ Caring, organised, friendly
✓ Teachers care about their jobs and kids	✓ Hard working staff and caring staff	✓ The outstanding teaching
✓ We value the staff! Friendly and approachable staff.	✓ All staff want best for children	✓ Friendly approachable staff
	✓ Teachers get to know all the children	✓ Individual support and care
✓ Nurturing and caring environment	✓ Very informative – always making time for pupils and parents	✓ Team spirit
✓ Lovely friendly school		✓ Progressive in developing the school
✓ Caring nature of teachers and the ability to teach through play	✓ Approachable staff. Nothing is a problem	✓ Tailored approach to individuals to help development needs
✓ The staff and the EMP	✓ Small and friendly	✓ Close knit
✓ Care about every child – the main focus	✓ Well taught and cared for – they love coming to school	✓ Lots of events to make school enjoyable
✓ Children well behaved	✓ Awesome playground facilities	✓
✓ One big family you work hard and it has made a difference to my child!	✓ A family which my children have loved! Genuine care and consideration given by the teachers	✓ The family feel – despite the school growing at a rapid rate! Go Team Cheveley!
✓ Positivity of teacher		
✓ Nurturing and caring staff	✓ Positive atmosphere	✓ A stable environment
✓ Child's best interests at the heart of everything	✓ Teachers know the children – a big family!	✓ A caring teacher who understands our child!
✓ The staff and headteacher	✓ Always looking to improve the school	✓ Varied afterschool clubs

✓ The support the staff have given over the years	✓ Approachable staff – helpful office staff!	✓ Communication with Mr Dent when required
✓ Teachers, TAs, children!	✓ Good extracurricular activities	✓ Inclusive and friendly
✓ Growing confidence of children as well as academics	✓ Friendly community with a relaxed environment	✓ Communication – it's never too much trouble to speak with someone!
✓ The teaching is excellent	✓ School values – every child matters!	✓ Variety of subjects and activities
✓ Care and support – you really know our children	✓ 'a very happy place to be' according to my child	✓ The rounded approach to covering resilience and confidence!
✓ Open door	✓ Everyone is looked after	✓ Staff go the extra mile
✓ Pupils are known by the staff.	✓ Always striving to do your best.	✓ Children not stressed – always happy!
✓ Friendly staff	✓ Everyone is approachable and friendly	✓ Dedicated teachers
✓ Children settle in and feel at home	✓ Children know their boundaries	✓ Information to parents
✓ Striving to improve	✓ Pupils and teachers work as a team	✓ Everyone gets along
✓ Improvements made across the school	the joy and excitement of learning	✓ Good discipline but friendly with it!

Word list created 'Describe us in 3 words':

Outstanding amazing friendly fantastic friendly helpful supportive family happy happy team fun bright friendly good outstanding successful rewarding wholeness supportive nurturing caring unique welcoming warm friendly caring fab super great supportive encouraging friendly caring fun friendly lovely caring amazing caring community awesome professional caring supportive warm caring fun amazing friendly fantastic amazing committed nurturing dedicated approachable friendly safe happy hard-working happy positive approachable positive safe friendly welcoming well-led exciting safe student-centred encouraging safe fun engaging outstanding welcoming community proactive enthusiastic happy friendly happy smart fab positive environment friendly supportive excellent approachable friendly family understanding caring phenomenal supportive fun safe friendly well-run good family friendly welcoming nice caring supportive friendly brilliant nurturing approachable professional understanding excellent fun relaxed brilliant nice caring family perfect perfect perfect loving empathetic energetic inclusive modern achieving inspirational nurturing passionate nurturing dedicated empowering progressive caring community professional friendly well-educated caring friendly focussed attentive personal aspiring approachable positive thinking forward-looking amazing friendly approachable caring progressive wonderful friendly encouraging professional fun exciting developing fun friendly exciting fun organised fair professional caring brilliant friendly forward-thinking approachable dedicated progressive energetic well-educated fantastic friendly welcoming caring exciting passionate creative committed enthusiastic amazing outstanding fun dynamic proficient approachable